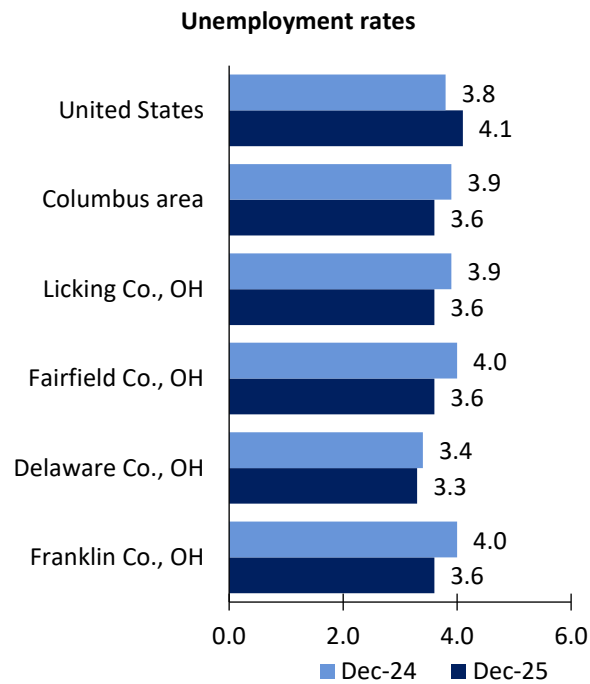


# Columbus, OH Area Economic Summary

Updated April 02, 2026

This summary presents a sampling of economic information for the area; supplemental data are provided for regions and the nation. Subjects include **unemployment, employment, wages, prices, spending, and benefits**. All data are not seasonally adjusted and some may be subject to revision. Area definitions may differ by subject. For more area summaries and geographic definitions, see <https://www.bls.gov/regions/economic-summaries.htm>.

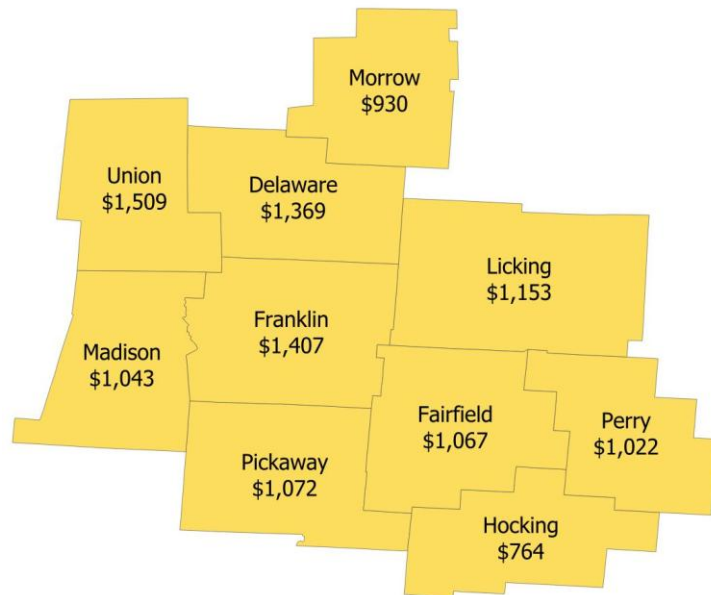
## Unemployment rates for the nation and selected areas



Source: U.S. BLS, Local Area Unemployment Statistics.

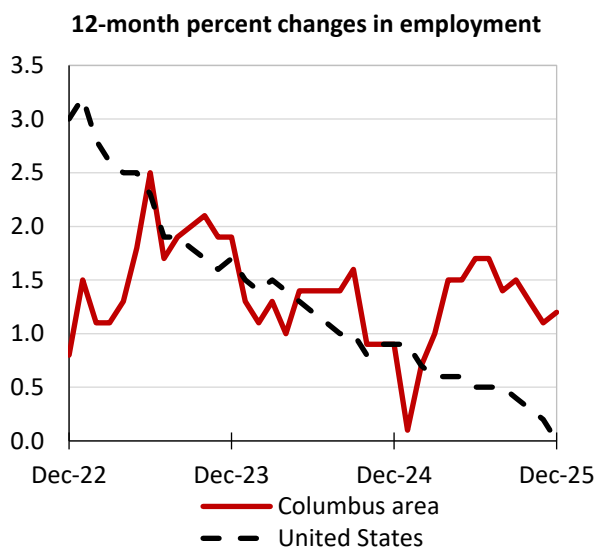
## Average weekly wages for all industries by county

Columbus area, third quarter 2025  
(U.S. = \$1,459; Area = \$1,353)



Source: U.S. BLS, Quarterly Census of Employment and Wages.

## Employment on nonfarm payrolls and employment by major industry sector, over-the-year changes



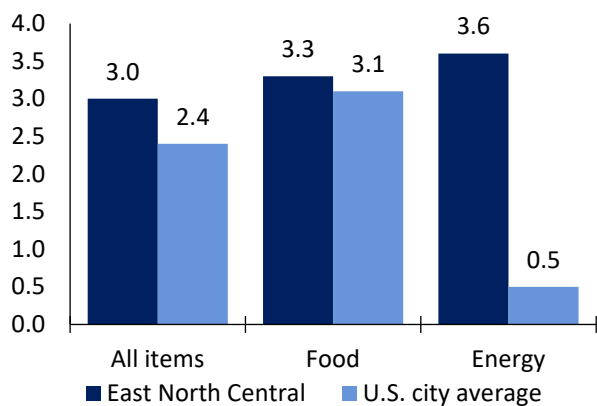
| Columbus area employment<br>(number in thousands) | Dec. 2025 | Change from Dec. 2024 to Dec. 2025 |         |
|---|-----------|------------------------------------|---------|
|   |           | Number                             | Percent |
| Total nonfarm                                     | 1,191.1   | 13.8                               | 1.2     |
| Mining, logging, and construction                 | 56.7      | 3.3                                | 6.2     |
| Manufacturing                                     | 77.5      | 0.4                                | 0.5     |
| Trade, transportation, and utilities              | 229.0     | 0.9                                | 0.4     |
| Information                                       | 17.9      | -0.2                               | -1.1    |
| Financial activities                              | 80.7      | 0.0                                | 0.0     |
| Professional and business services                | 194.5     | 2.8                                | 1.5     |
| Education and health services                     | 182.4     | 0.5                                | 0.3     |
| Leisure and hospitality                           | 108.3     | 1.5                                | 1.4     |
| Other services                                    | 45.0      | 0.5                                | 1.1     |
| Government  | 199.1     | 4.1                                | 2.1     |

Source: U.S. BLS, Current Employment Statistics.



Prices paid by urban consumers for selected categories, over-the-year change

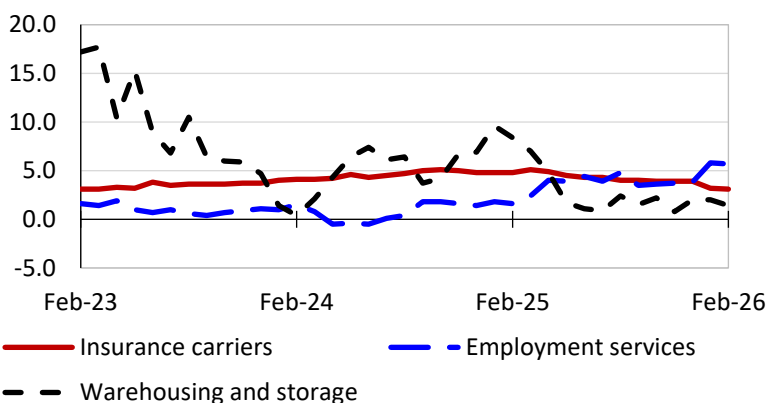
12-month percent change in CPI-U, February 2026



Source: U.S. BLS, Consumer Price Index.

Selling prices received by producers for selected industries nationwide, over-the-year change

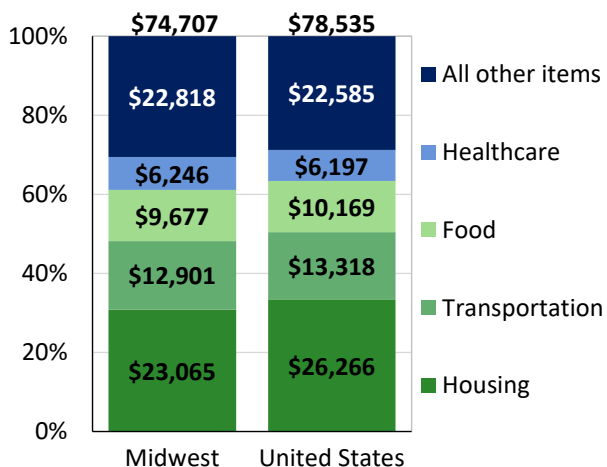
12-month percent changes in PPI



Source: U.S. BLS, Producer Price Index.

Average annual spending and percent distribution for selected categories

Average annual expenditures, 2024



Source: U.S. BLS, Consumer Expenditure Survey.

Average hourly wages for selected occupations, May 2024

| Occupation                                     | Columbus area | United States |
|--|---------------|---------------|
| All occupations                                | \$31.39       | \$32.66       |
| Network and computer systems administrators    | 48.31         | 48.65         |
| Mechanical engineers                           | 46.98         | 52.92         |
| Firefighters                                   | 34.42         | 30.72         |
| Radiologic technologists and technicians       | 33.01         | 38.35         |
| Claims adjusters, examiners, and investigators | 29.20         | 37.87         |
| Stockers and order fillers                     | 19.04         | 18.71         |

Source: U.S. BLS, Occupational Employment and Wage Statistics.

Employer costs per hour worked for wages and selected employee benefits by census division

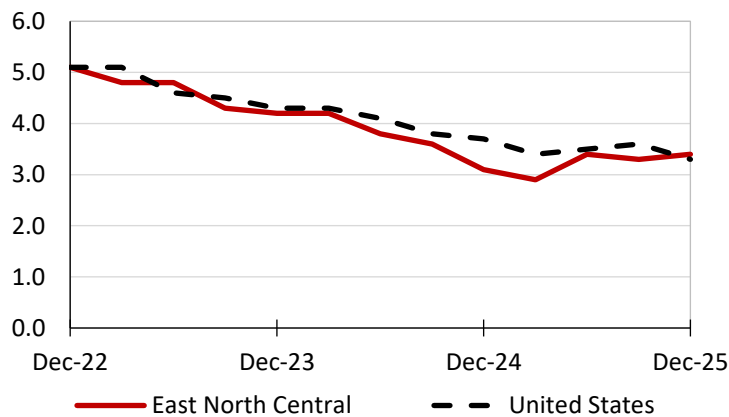
| Private industry, December 2025 | East North Central | United States |
|---------------------------------|--------------------|---------------|
| Total compensation              | \$43.00            | \$46.15       |
| Wages and salaries              | 29.71              | 32.36         |
| Total benefits                  | 13.30              | 13.79         |
| Paid leave                      | 3.08               | 3.52          |
| Vacation                        | 1.54               | 1.75          |
| Supplemental pay                | 2.04               | 1.87          |
| Insurance                       | 3.50               | 3.51          |
| Retirement and savings          | 1.58               | 1.55          |
| Legally required benefits       | 3.11               | 3.34          |

Map of Census Regions and Divisions

Source: U.S. BLS, Employer Costs for Employee Compensation.

Changes in wages and salaries over-the-year

12-month percent changes in ECI



Source: U.S. BLS, Employment Cost Index.

